



NSAI
Standards

Irish Standard Recommendation
S.R. CEN/TR 16411:2019

Child care articles - Compiled interpretations of CEN/TC 252 standards

S.R. CEN/TR 16411:2019

Incorporating amendments/corrigenda/National Annexes issued since publication:

The National Standards Authority of Ireland (NSAI) produces the following categories of formal documents:

I.S. xxx: Irish Standard — national specification based on the consensus of an expert panel and subject to public consultation.

S.R. xxx: Standard Recommendation — recommendation based on the consensus of an expert panel and subject to public consultation.

SWiFT xxx: A rapidly developed recommendatory document based on the consensus of the participants of an NSAI workshop.

This document replaces/revises/consolidates the NSAI adoption of the document(s) indicated on the CEN/CENELEC cover/Foreword and the following National document(s):

NOTE: The date of any NSAI previous adoption may not match the date of its original CEN/CENELEC document.

This document is based on:

CEN/TR 16411:2019

Published:

2019-05-01

This document was published under the authority of the NSAI and comes into effect on:

2019-05-19

ICS number:

97.190

NOTE: If blank see CEN/CENELEC cover page

NSAI
1 Swift Square,
Northwood, Santry
Dublin 9

T +353 1 807 3800
F +353 1 807 3838
E standards@nsai.ie
W NSAI.ie

Sales:
T +353 1 857 6730
F +353 1 857 6729
W standards.ie

Údarás um Chaighdeáin Náisiúnta na hÉireann

National Foreword

S.R. CEN/TR 16411:2019 is the adopted Irish version of the European Document CEN/TR 16411:2019, Child care articles - Compiled interpretations of CEN/TC 252 standards

This document does not purport to include all the necessary provisions of a contract. Users are responsible for its correct application.

For relationships with other publications refer to the NSAI web store.

Compliance with this document does not of itself confer immunity from legal obligations.

In line with international standards practice the decimal point is shown as a comma (,) throughout this document.

This page is intentionally left blank

TECHNICAL REPORT

CEN/TR 16411

RAPPORT TECHNIQUE

TECHNISCHER BERICHT

May 2019

ICS 97.190

Supersedes CEN/TR 16411:2014

English Version

Child care articles - Compiled interpretations of CEN/TC 252 standards

Articles de puériculture - Compilation des
interprétations des normes du CEN/TC 252

Artikel für Säuglinge und Kleinkinder - Gesammelte
Interpretationen der CEN/TC 252-Normen

This Technical Report was approved by CEN on 8 March 2019. It has been drawn up by the Technical Committee CEN/TC 252.

CEN members are the national standards bodies of Austria, Belgium, Bulgaria, Croatia, Cyprus, Czech Republic, Denmark, Estonia, Finland, Former Yugoslav Republic of Macedonia, France, Germany, Greece, Hungary, Iceland, Ireland, Italy, Latvia, Lithuania, Luxembourg, Malta, Netherlands, Norway, Poland, Portugal, Romania, Serbia, Slovakia, Slovenia, Spain, Sweden, Switzerland, Turkey and United Kingdom.



EUROPEAN COMMITTEE FOR STANDARDIZATION
COMITÉ EUROPÉEN DE NORMALISATION
EUROPÄISCHES KOMITEE FÜR NORMUNG

CEN-CENELEC Management Centre: Rue de la Science 23, B-1040 Brussels

Contents

Page

Contents

European foreword.....	4
Introduction	5
1 Scope	8
2 00252033 - EN 1273:2005, <i>Child use and care articles — Baby walking frames — Safety requirements and test methods</i>	9
3 00252059 - EN 1888:2012, <i>Child care articles — Wheeled child conveyances — Safety requirements and test methods</i>	11
4 00252051 - EN 1930:2011, <i>Child use and care articles — Safety barriers — Safety requirements and test methods</i>	27
5 00252046 - EN 12586:2007, <i>Child use and care articles - Soother holder - Safety requirements and test methods</i>	45
6 00252048 - EN 12790:2009, <i>Child use and care articles — Reclined cradles</i>	63
7 00252049 - EN 12221-1:2008 , <i>Changing units for domestic use — Part 1: Safety requirements</i>	68
8 00252050 - EN 12221-2:2008, <i>Changing units for domestic use — Part 2: Test methods</i>	71
9 00252054 - EN 1466:2004+A1:2007, <i>Child care articles — Carry cots and stands — Safety requirements and test methods</i>	72
10 00252032 - EN 14350-2:2004, <i>Child use and care articles — Drinking equipment — Part 2: Chemical requirements and tests</i>	75
11 00252089 - EN 1400:2013+A1:2014, <i>Child use and care articles - Soothers for babies and young children - Safety requirements and test methods</i>	77
12 00252024 - EN 14372:2004, <i>Child use and care articles — Cutlery and feeding utensils — Safety requirements and tests</i>	99
13 00252065 - EN 16120:2012, <i>Child use and care articles - Chair mounted seat</i>	102
14 00252023 - EN 14350-1:2004, <i>Child use and care articles - Drinking equipment - Part 1: General and mechanical requirements and tests</i>	104
15 00252058 - EN 16232:2013, <i>Child use and care articles - Infant swings</i>	108
Annex A (informative) Interpretation 3 on 3.9 and 5.1.4.2 in EN 12586:2007, <i>Child use and care articles — Soother holder — Safety requirements and test methods</i> (WI 00252046)	111
A.1 Introduction	111
A.2 Examples of possible ventilation holes in more recent models of soother holders	112

Annex B (informative) Reply to interpretation 3 on 3.9 and 5.1.4.2 in EN 12586:2007, <i>Child use and care articles — Soother holder — Safety requirements and test methods</i> (WI 00252046).....	114
Annex C (informative) Reply to interpretation 1 on 5.1.10 in EN 12586:2007 <i>Child use and care articles — Soother holder — Safety requirements and test methods</i> (WI 00252046)	116
C.1 Ventilation holes in fastener (5.1.10)	116
C.2 Discussion	116
C.3 Final Interpretation	121
Bibliography	122

CEN/TR 16411:2019 (E)

European foreword

This document (CEN/TR 16411:2019) has been prepared by Technical Committee CEN/TC 252 “Child care articles”, the secretariat of which is held by AFNOR.

Attention is drawn to the possibility that some of the elements of this document may be the subject of patent rights. CEN shall not be held responsible for identifying any or all such patent rights.

This document supersedes CEN/TR 16411:2014.

Introduction

This Technical Report contains replies to requests for interpretation and clarifications with regard to the understanding of clauses in the standards elaborated within the CEN/TC 252. The replies concern those requests which have resulted in an interpretation or the decision that no action is necessary.

An interpretation does not have the same status as the text of the standard, nor can it overrule the text of the standard. However, following an interpretation should give assurance that the relevant clause of the standard has been correctly applied. An interpretation will only be regarded as a clarification of the meaning of the standard.

a) Disclaimer:

The interpretations and clarifications have been derived by expert groups of CEN/TC 252. The information contained herein is for guidance only and does not reflect the formal approval by CEN or CEN member bodies. It should be noted that the interpretations are neither part of any standard nor have been referenced in the Official Journal of the European Union.

b) Requests for interpretation:

Requests for interpretations may be submitted by a CEN member body through its national committee or by a CEN/TC 252 liaison (but not directly by an individual or a company) – in accordance with the interpretation protocols agreed by CEN/TC 252. The requests are then channelled to the relevant CEN/TC 252 working group which will deal with the request.

A request for an interpretation may lead to:

1) an interpretation of the standard:

this should reflect a reasonable interpretation of how the standard should be used, while taking into account:

- i) the wording of the standard;
- ii) the rationale of the standard;
- iii) the history of the standard;

2) a no-action decision:

this is applicable when it is agreed that the standard appropriately specifies how a child care article should be assessed;

3) a proposal for an amendment of the standard:

this is applicable when it is agreed that the standard is deficient in some way.

NOTE Interpretations are published in CEN/TR 16411, which will be updated on a regular basis.

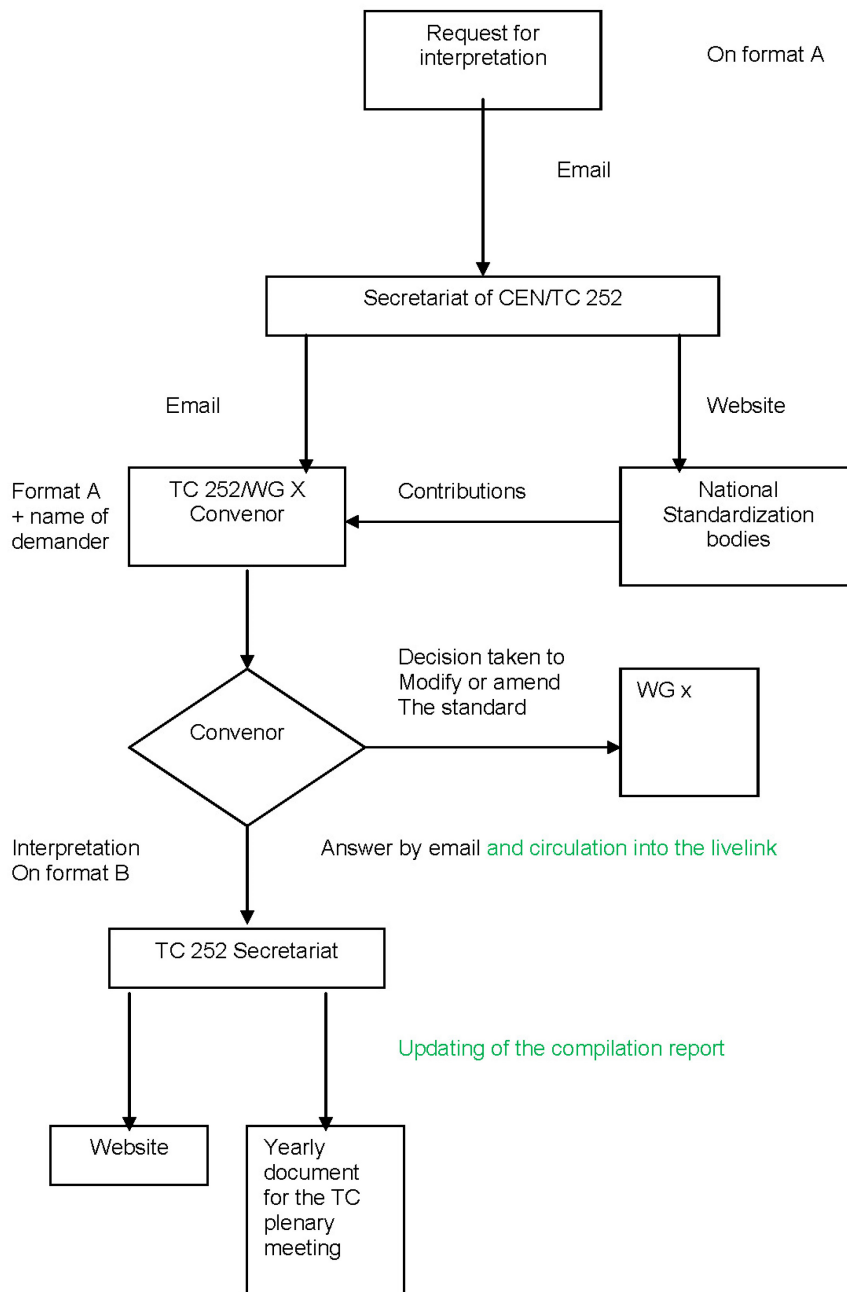
Proposals for amendments will be progressed as new work item proposals in accordance with CEN rules.

CEN/TR 16411:2019 (E)

c) Answers to requests for interpretations:

Since requests for interpretations are submitted through a CEN member body, it is assumed that the member body will keep itself informed about decisions concerning the request and its progress and will itself inform the originator of the request as appropriate.

FLOW CHART



CEN/TR 16411:2019 (E)**1 Scope**

The purpose of this CEN Technical Report is to provide replies to requests for interpretations and clarifications of:

- EN 1273:2005, *Child use and care articles — Baby walking frames — Safety requirements and test methods*;
- EN 1888:2012, *Child care articles — Wheeled child conveyances — Safety requirements and test methods*;
- EN 1930:2011, *Child use and care articles — Safety barriers — Safety requirements and test methods*;
- EN 12586:2007, *Child use and care articles — Soother holder — Safety requirements and test methods*;
- EN 12790:2009, *Child use and care articles — Reclined cradles*;
- EN 12221-1:2008, *Changing units for domestic use — Part 1: Safety requirements*;
- EN 12221-2:2008, *Changing units for domestic use — Part 2: Test methods*;
- EN 1466:2004+A1:2007, *Child care articles — Carry cots and stands — Safety requirements and test methods*;
- EN 14350-2:2004, *Child use and care articles — Drinking equipment — Part 2: Chemical requirements and tests*;
- EN 1400:2013+A1:2014, *Child use and care articles — Soothers for babies and young children*;
- EN 14372:2004, *Child use and care articles — Cutlery and feeding utensils — Safety requirements and tests*;
- EN 16120:2012, *Child use and care articles — Chair mounted seat*;
- EN 14350-1:2004, *Child use and care articles — Drinking equipment - Part 1: General and mechanical requirements and tests*;
- EN 16232:2013, *Child use and care articles — Infant swings*.

2 00252033 – EN 1273:2005, *Child use and care articles — Baby walking frames — Safety requirements and test methods*

Table 1 — Summary table of the request for interpretations classified in the order of the clauses/subclauses of EN 1273:2005

Clause/Subclause	Title	Interpretation n°
6.1.1		1/2013
6.6.2.3		1/2014 (2)

Table 2 — Table of the request for interpretation/clarification for EN 1273:2005

N°	Clause/ Subclause / Annex	Paragraph/ Figure/ Table/Note	Question	Reply
1	6.1.1		For the tests order shall we follow 6.1.1. but what is the “test order of the standard” ? Is it the order of requirement §5 or order of tests methods §6 ?. In one case the §5.9 should be done after §5.14.	

This is a free preview. Purchase the entire publication at the link below:

[Product Page](#)

-
- [Looking for additional Standards? Visit Intertek Inform Infostore](#)
 - [Learn about LexConnect, All Jurisdictions, Standards referenced in Australian legislation](#)
-