



NSAI
Standards

Irish Standard
I.S. EN 61375-3-1:2012

Electronic railway equipment - Train communication network (TCN) -- Part 3 -1: Multifunction Vehicle Bus (MVB) (IEC 61375-3-1:2012 (EQV))

I.S. EN 61375-3-1:2012

Incorporating amendments/corrigenda issued since publication:

The National Standards Authority of Ireland (NSAI) produces the following categories of formal documents:

I.S. xxx: Irish Standard – national specification based on the consensus of an expert panel and subject to public consultation.

S.R. xxx: Standard Recommendation - recommendation based on the consensus of an expert panel and subject to public consultation.

SWiFT xxx: A rapidly developed recommendatory document based on the consensus of the participants of an NSAI workshop.

<i>This document replaces:</i>	<i>This document is based on:</i> EN 61375-3-1:2012	<i>Published:</i> 3 August, 2012
This document was published under the authority of the NSAI and comes into effect on: 10 August, 2012		ICS number: 45.060
NSAI 1 Swift Square, Northwood, Santry Dublin 9	T +353 1 807 3800 F +353 1 807 3838 E standards@nsai.ie W NSAI.ie	Sales: T +353 1 857 6730 F +353 1 857 6729 W standards.ie
Údarás um Chaighdeáin Náisiúnta na hÉireann		

EUROPEAN STANDARD
NORME EUROPÉENNE
EUROPÄISCHE NORM

EN 61375-3-1

August 2012

ICS 45.060

English version

**Electronic railway equipment -
Train communication network (TCN) -
Part 3-1: Multifunction Vehicle Bus (MVB)
(IEC 61375-3-1:2012)**

Matériel électronique ferroviaire -
Réseau embarqué de train (TCN) -
Partie 3-1: Bus de Véhicule Multifonctions
(MVB)
(CEI 61375-3-1:2012)

Elektronische Betriebsmittel für Bahnen -
Zug-Kommunikations-Netzwerk -
Teil 3-1: Multipurpose Vehicle Bus (MVB)
(IEC 61375-3-1:2012)

This European Standard was approved by CENELEC on 2012-07-26. CENELEC members are bound to comply with the CEN/CENELEC Internal Regulations which stipulate the conditions for giving this European Standard the status of a national standard without any alteration.

Up-to-date lists and bibliographical references concerning such national standards may be obtained on application to the CEN-CENELEC Management Centre or to any CENELEC member.

This European Standard exists in three official versions (English, French, German). A version in any other language made by translation under the responsibility of a CENELEC member into its own language and notified to the CEN-CENELEC Management Centre has the same status as the official versions.

CENELEC members are the national electrotechnical committees of Austria, Belgium, Bulgaria, Croatia, Cyprus, the Czech Republic, Denmark, Estonia, Finland, Former Yugoslav Republic of Macedonia, France, Germany, Greece, Hungary, Iceland, Ireland, Italy, Latvia, Lithuania, Luxembourg, Malta, the Netherlands, Norway, Poland, Portugal, Romania, Slovakia, Slovenia, Spain, Sweden, Switzerland, Turkey and the United Kingdom.

CENELEC

European Committee for Electrotechnical Standardization
Comité Européen de Normalisation Electrotechnique
Europäisches Komitee für Elektrotechnische Normung

Management Centre: Avenue Marnix 17, B - 1000 Brussels

I.S. EN 61375-3-1:2012

EN 61375-3-1:2012

- 2 -

Foreword

The text of document 9/1644/FDIS, future edition 1 of IEC 61375-3-1, prepared by IEC/TC 9 "Electrical equipment and systems for railways" was submitted to the IEC-CENELEC parallel vote and approved by CENELEC as EN 61375-3-1:2012.

The following dates are fixed:

- latest date by which the document has to be implemented at national level by publication of an identical national standard or by endorsement (dop) 2013-04-26
- latest date by which the national standards conflicting with the document have to be withdrawn (dow) 2015-07-26

Attention is drawn to the possibility that some of the elements of this document may be the subject of patent rights. CENELEC [and/or CEN] shall not be held responsible for identifying any or all such patent rights.

This document has been prepared under a mandate given to CENELEC by the European Commission and the European Free Trade Association, and supports essential requirements of EU Directive(s).

For the relationship with EU Directive(s) see informative Annex ZZ, which is an integral part of this document.

Endorsement notice

The text of the International Standard IEC 61375-3-1:2012 was approved by CENELEC as a European Standard without any modification.

In the official version, for Bibliography, the following notes have to be added for the standards indicated:

IEC 60332-1-2	NOTE	Harmonized as EN 60332-1-2.
IEC 60870 series	NOTE	Harmonized in EN 60870 series.
IEC 61158-2	NOTE	Harmonized as EN 61158-2.

Annex ZA (normative)

Normative references to international publications with their corresponding European publications

The following documents, in whole or in part, are normatively referenced in this document and are indispensable for its application. For dated references, only the edition cited applies. For undated references, the latest edition of the referenced document (including any amendments) applies.

NOTE When an international publication has been modified by common modifications, indicated by (mod), the relevant EN/HD applies.

<u>Publication</u>	<u>Year</u>	<u>Title</u>	<u>EN/HD</u>	<u>Year</u>
IEC 60245-1	-	Rubber insulated cables - Rated voltages up to and including 450/750 V - Part 1: General requirements	-	-
IEC 60304	-	Standard colours for insulation for low-frequency cables and wires	HD 402 S2	-
IEC 60332-1-1	-	Tests on electric and optical fibre cables under fire conditions - Part 1-1: Test for vertical flame propagation for a single insulated wire or cable - Apparatus	EN 60332-1-1	-
IEC 60571	-	Electronic equipment used on rail vehicles	-	-
IEC 60794-1-1	-	Optical fibre cables - Part 1-1: Generic specification - General	EN 60794-1-1	-
IEC 60807	Series	Rectangular connectors for frequencies below 3 MHz	-	-
IEC 60870-5-1	-	Telecontrol equipment and systems - Part 5: Transmission protocols - Section 1: Transmission frame formats	EN 60870-5-1	-
IEC 61375-2-1	-	Electronic railway equipment - Train communication network (TCN) - Part 2-1: Wire Train Bus (WTB)	EN 61375-2-1	-
ISO/IEC 8482	-	Information technology - Telecommunications - and information exchange between systems - Twisted pair multipoint interconnections	-	-
ISO/IEC 8802-2	-	Information technology - Telecommunications - and information exchange between systems - Local and metropolitan area networks - Specific requirements - Part 2: Logical link control	-	-
ISO/IEC 8824	Series	Information technology - Abstract Syntax Notation One (ASN.1)	-	-
ISO/IEC 8825	Series	Information technology - ASN.1 encoding rules	-	-
ISO/IEC 9646	Series	Information technology - Open Systems Interconnection - Conformance testing methodology and framework	-	-
ISO/IEC 13239	-	Information technology - Telecommunications - and information exchange between systems - High-level data link control (HDLC) procedures	-	-

I.S. EN 61375-3-1:2012

EN 61375-3-1:2012

- 4 -

<u>Publication</u>	<u>Year</u>	<u>Title</u>	<u>EN/HD</u>	<u>Year</u>
ITU-T Recommendation Z.100	-	Specification and Description Language (SDL)-		-

Annex ZZ
(informative)

Coverage of Essential Requirements of EU Directives

This European Standard has been prepared under a mandate given to CENELEC by the European Commission and the European Free Trade Association and within its scope the standard covers all relevant essential requirements as given in Annex III of the EU Directive 2008/57/EC.

Compliance with this standard provides one means of conformity with the specified essential requirements of the Directive concerned.

WARNING: Other requirements and other EU Directives may be applicable to the products falling within the scope of this standard.

This page is intentionally left BLANK.

CONTENTS

FOREWORD.....	8
INTRODUCTION.....	10
1 Scope.....	12
2 Normative references.....	12
3 Terms and definitions, abbreviations and conventions	13
3.1 Terms and definitions	13
3.2 Abbreviations.....	30
3.3 Conventions	31
3.3.1 Base of numeric values.....	31
3.3.2 Naming conventions.....	32
3.3.3 Time naming conventions	32
3.3.4 Procedural interface conventions	32
3.3.5 Specification of transmitted data	35
3.3.6 State diagram conventions.....	37
4 Physical Layer	38
4.1 Topology	38
4.1.1 Segments	38
4.1.2 Couplers.....	38
4.1.3 Double-line segments	39
4.2 Device classes	39
4.2.1 Capabilities.....	39
4.2.2 Class 0 devices	40
4.2.3 Class 1 devices	40
4.2.4 Class 2 devices	40
4.2.5 Class 3 devices	40
4.2.6 Class 4 devices	40
4.2.7 Class 5 devices	40
4.2.8 Device Attachment.....	41
4.3 Specifications common to all media	41
4.3.1 Signalling speed	41
4.3.2 Propagation delays	41
4.3.3 Transceiver interface	41
4.3.4 Redundant medium (option).....	42
4.4 Electrical Short Distance medium (choice)	43
4.4.1 ESD topology.....	43
4.4.2 ESD configuration rules	44
4.4.3 ESD section specifications.....	45
4.4.4 ESD shielding	45
4.4.5 ESD medium-dependent interface.....	46
4.4.6 ESD Line_Unit specifications	48
4.4.7 ESD signal wave form.....	48
4.4.8 ESD transmitter	49
4.4.9 ESD receiver	50
4.5 Electrical Middle Distance medium (choice)	51
4.5.1 EMD topology	51
4.5.2 EMD configuration rules.....	51

4.5.3	EMD terminator.....	52
4.5.4	Cable section.....	52
4.5.5	EMD shielding.....	53
4.5.6	EMD medium-dependent interface	54
4.5.7	EMD Line_Unit specifications.....	57
4.5.8	EMD signal waveform	58
4.5.9	EMD transmitter specifications.....	58
4.5.10	EMD receiver specifications.....	62
4.6	Optical Glass Fibre medium (choice).....	63
4.6.1	OGF topology	64
4.6.2	OGF optical cable and fibre.....	64
4.6.3	OGF medium-dependent interface	64
4.6.4	OGF test signal (guideline)	65
4.6.5	OGF transmitter specifications.....	66
4.6.6	OGF receiver specifications.....	66
4.6.7	OGF active star coupler	67
4.6.8	OGF double-line layout (option).....	68
5	Medium-dependent signalling.....	68
5.1	Frame encoding and decoding	68
5.1.1	Conventions.....	68
5.1.2	Bit encoding.....	69
5.1.3	Non-data symbols	69
5.1.4	Start Bit	69
5.1.5	Start Delimiter.....	69
5.1.6	End Delimiter	70
5.1.7	Valid frame (definition).....	71
5.1.8	Detection of line idle	71
5.1.9	Detection of collision.....	71
5.1.10	Receiver behaviour in case of error.....	71
5.1.11	Jabber halt	71
5.2	Line redundancy (option)	72
5.2.1	Principle	72
5.2.2	Redundant transmission.....	72
5.2.3	Redundant reception.....	72
5.2.4	Switchover.....	72
5.2.5	Redundancy status report	73
5.3	Repeater	73
5.3.1	Repeater between single-line segments	74
5.3.2	Repeater for redundant medium (option)	74
6	Frames and telegrams	75
6.1	Frame format.....	75
6.1.1	Master Frame format	75
6.1.2	Slave Frame format	75
6.1.3	Check Sequence.....	76
6.2	Telegram timing.....	77
6.2.1	Conventions.....	77
6.2.2	Reply delay (definition).....	77
6.2.3	Frame spacing at the source.....	79
6.2.4	Frame spacing at the destination.....	79

6.2.5	Frame spacing at the master.....	80
6.3	Detection of correct frames, collision and silence by the master	81
6.3.1	Correct frame (definition)	81
6.3.2	Detection of collision by the master	81
6.3.3	Detection of silence by the master.....	81
7	Link Layer Control.....	81
7.1	Addressing	81
7.1.1	Device Address.....	81
7.1.2	Logical_Address	81
7.1.3	Group_Address.....	82
7.2	Master Frames contents	82
7.2.1	Master Frame format	82
7.2.2	F_code encoding	82
7.3	Slave Frame contents	83
7.3.1	Slave Frame format	83
7.3.2	Size error.....	84
7.4	Telegram types.....	84
7.4.1	Process Data telegram.....	84
7.4.2	Message Data.....	85
7.4.3	Supervisory Data telegrams	86
8	Medium allocation.....	87
8.1	Organisation	87
8.1.1	Turn	87
8.1.2	Basic Period	87
8.1.3	Padding	88
8.2	Periodic Polling.....	88
8.2.1	Periodic List.....	88
8.2.2	Individual Period	88
8.2.3	Periodic Phase construction.....	89
8.3	Event Polling	90
8.3.1	Group_Address.....	90
8.3.2	Event_Round	91
8.3.3	Recommended event search algorithm.....	93
8.3.4	Supervisory Data frames for Event_Arbitration	94
8.4	Devices_Scan.....	96
8.4.1	Device_Status	96
8.4.2	Device_Status protocol	98
8.4.3	Devices_Scan protocol	99
9	Mastership transfer	99
9.1	Mastership transfer operation	99
9.1.1	Bus administrator configuration	99
9.2	Mastership transfer specifications	100
9.2.1	States.....	100
9.2.2	Time-outs for mastership transfer	103
9.3	Supervisory data frames for mastership transfer	103
9.3.1	Device_Status telegram	103
9.3.2	Mastership transfer telegram.....	104
10	Link Layer Interface	104
10.1	Link Layer layering.....	104

10.2	Link Process Data interface	105
10.3	Link Message Data interface	105
10.3.1	General	105
10.3.2	Priority	106
10.3.3	Packet size	106
10.3.4	Protocol_Type	106
10.3.5	Message Transport Protocol	106
10.4	Link Supervision Interface	106
10.4.1	General	106
10.4.2	Link Supervision Interface procedures	106
10.4.3	MVB_Status	107
10.4.4	MVB_Control	107
10.4.5	MVB_Devices	108
10.4.6	MVB_Administrator	108
10.4.7	MVB_Report	110
11	Real-Time Protocols	111
12	Gateway Function	111
13	Network Management	111
13.1	Contents of this clause	111
13.2	MVB Managed objects	111
13.2.1	MVB link objects	111
13.3	MVB Services and management messages	112
13.3.1	MVB link services	112
	Bibliography	126
	Figure 1 – Reference device and structure of the document	11
	Figure 2 – State transition example	37
	Figure 3 – MVB configuration	39
	Figure 4 – Transceiver interface	42
	Figure 5 – Example of ESD segment	43
	Figure 6 – Example of terminator	44
	Figure 7 – ESD backplane section (double-line)	46
	Figure 8 – ESD connector arrangement	47
	Figure 9 – ESD terminator connector arrangement	48
	Figure 10 – Example of start of frame (ESD)	49
	Figure 11 – End of an ESD frame (both cases)	50
	Figure 12 – EMD medium	51
	Figure 13 – Shielding (single-line segment)	53
	Figure 14 – Single-line device attachment	54
	Figure 15 – Double-line device attachment to EMD	55
	Figure 16 – EMD connectors arrangement	56
	Figure 17 – EMD terminator strapping	57
	Figure 18 – Example of start of an EMD frame	58
	Figure 19 – Example of pulse waveform at EMD transmitter	60
	Figure 20 – Example of end of EMD frame	61
	Figure 21 – EMD receiver test signal	62

Figure 22 – Optical link	64
Figure 23 – Optical connector (dimensions in millimeters).....	65
Figure 24 – Example of start of OGF frame	66
Figure 25 – Edge jitter	67
Figure 26 – Example of active star coupler	67
Figure 27 – Example of a duplicated star coupler.....	68
Figure 28 – "0" and "1" data encoding.....	69
Figure 29 – Non_Data symbols encoding.....	69
Figure 30 – Master Start Delimiter	70
Figure 31 – Slave Start Delimiter	70
Figure 32 – Example of End Delimiter for EMD medium.....	70
Figure 33 – Example of a valid frame (OGF medium).....	71
Figure 34 – Signal skew	72
Figure 35 – Example of repeater for single-line attachment.....	74
Figure 36 – Example of repeater connecting a double-line to a single line segment.....	75
Figure 37 – Master Frame Format	75
Figure 38 – Slave Frames	76
Figure 39 – Telegram timing.....	77
Figure 40 – Example of Reply delay.....	78
Figure 41 – Frame spacing at the source side	79
Figure 42 – Frame spacing at the destination(s)	79
Figure 43 – Frame spacing at the master side	80
Figure 44 – Master Frame contents	82
Figure 45 – Word ordering in a Slave Frame.....	84
Figure 46 – Process Data telegram	84
Figure 47 – Message Data telegram	85
Figure 48 – Supervisory Data telegram	86
Figure 49 – Basic Periods	87
Figure 50 – Example of construction of the Macro_Cycle	90
Figure 51 – General_Event_Request frame format	94
Figure 52 – Group_Event_Request frame (M = 6, C = ABCDEF).....	94
Figure 53 – Single_Event_Request frame	95
Figure 54 – Event_Identifier_Response frame	95
Figure 55 – Device_Status_Request.....	96
Figure 56 – Device_Status_Response	96
Figure 57 – Device_Status of Class 1 device	97
Figure 58 – Device_Status of Class 2/3/4/5 device	97
Figure 59 – Device_Status of a device with Bus Administrator capability	97
Figure 60 – Device_Status of a device with Gateway capability	98
Figure 61 – Mastership Transfer states	102
Figure 62 – Device_Status_Request (sent by current master)	103
Figure 63 – Device_Status_Response (sent by proposed master)	103
Figure 64 – Mastership_Transfer_Request (sent by current master).....	104

Figure 65 – Mastership_Transfer_Response (sent by proposed next master)	104
Figure 66 – Link Layer Layering.....	105
Table 1 – Template for the specification of an interface procedure	34
Table 2 – Example of message structure	35
Table 3 – Example of textual message form (corresponding to Table 2).....	36
Table 4 – State transitions table	37
Table 5 – MVB devices capabilities	40
Table 6 – Pin assignment for the ESD connector	47
Table 7 – Pin assignment for the EMD connector.....	56
Table 8 – Master Frame types and F_code	83
Table 9 – LS_RESULT encoding	107
Table 10 – MVB_Status object	107
Table 11 – MVB_Control object	108
Table 12 – MVB_Devices object	108
Table 13 – MVB_Administrator object.....	109
Table 14 – LS_V_REPORT encoding.....	111
Table 15 – Example of mvb_administrator_list.....	123

INTERNATIONAL ELECTROTECHNICAL COMMISSION

**ELECTRONIC RAILWAY EQUIPMENT –
TRAIN COMMUNICATION NETWORK (TCN) –****Part 3-1: Multifunction Vehicle Bus (MVB)**

FOREWORD

- 1) The International Electrotechnical Commission (IEC) is a worldwide organization for standardization comprising all national electrotechnical committees (IEC National Committees). The object of IEC is to promote international co-operation on all questions concerning standardization in the electrical and electronic fields. To this end and in addition to other activities, IEC publishes International Standards, Technical Specifications, Technical Reports, Publicly Available Specifications (PAS) and Guides (hereafter referred to as "IEC Publication(s)"). Their preparation is entrusted to technical committees; any IEC National Committee interested in the subject dealt with may participate in this preparatory work. International, governmental and non-governmental organizations liaising with the IEC also participate in this preparation. IEC collaborates closely with the International Organization for Standardization (ISO) in accordance with conditions determined by agreement between the two organizations.
- 2) The formal decisions or agreements of IEC on technical matters express, as nearly as possible, an international consensus of opinion on the relevant subjects since each technical committee has representation from all interested IEC National Committees.
- 3) IEC Publications have the form of recommendations for international use and are accepted by IEC National Committees in that sense. While all reasonable efforts are made to ensure that the technical content of IEC Publications is accurate, IEC cannot be held responsible for the way in which they are used or for any misinterpretation by any end user.
- 4) In order to promote international uniformity, IEC National Committees undertake to apply IEC Publications transparently to the maximum extent possible in their national and regional publications. Any divergence between any IEC Publication and the corresponding national or regional publication shall be clearly indicated in the latter.
- 5) IEC itself does not provide any attestation of conformity. Independent certification bodies provide conformity assessment services and, in some areas, access to IEC marks of conformity. IEC is not responsible for any services carried out by independent certification bodies.
- 6) All users should ensure that they have the latest edition of this publication.
- 7) No liability shall attach to IEC or its directors, employees, servants or agents including individual experts and members of its technical committees and IEC National Committees for any personal injury, property damage or other damage of any nature whatsoever, whether direct or indirect, or for costs (including legal fees) and expenses arising out of the publication, use of, or reliance upon, this IEC Publication or any other IEC Publications.
- 8) Attention is drawn to the Normative references cited in this publication. Use of the referenced publications is indispensable for the correct application of this publication.
- 9) Attention is drawn to the possibility that some of the elements of this IEC Publication may be the subject of patent rights. IEC shall not be held responsible for identifying any or all such patent rights.

International Standard IEC 61375-3-1 has been prepared by IEC technical committee 9: Electrical equipment and systems for railways.

This first edition cancels and replaces the clauses of IEC 61375-1, second edition, published in 2007, relevant to the specification of MVB and constitutes a technical revision.

It was prepared taking into account IEC 61375-1 third edition.

The text of this standard is based on the following documents:

FDIS	Report on voting
9/1644/FDIS	9/1668/RVD

Full information on the voting for the approval of this standard can be found in the report on voting indicated in the above table.

I.S. EN 61375-3-1:2012

61375-3-1 © IEC:2012

– 9 –

This publication has been drafted in accordance with the ISO/IEC Directives, Part 2.

A list of all parts of IEC 61375 series, under the general title *Electronic railway equipment – Train communication network (TCN)*, can be found on the IEC website.

The committee has decided that the contents of this publication will remain unchanged until the stability date indicated on the IEC web site under "<http://webstore.iec.ch>" in the data related to the specific publication. At this date, the publication will be

- reconfirmed,
- withdrawn,
- replaced by a revised edition, or
- amended.

INTRODUCTION

This part of IEC 61375 specifies one component of the Train Communication Network, the Multifunction Vehicle Bus (MVB), a serial data communication bus designed primarily, but not exclusively, for interconnecting equipment where interoperability and interchangeability are needed.

This part specifies:

- a) the physical media in single-line and double-line configurations;
- b) the signalling and the redundancy handling;
- c) the format and timing of the transmitted frame and telegrams;
- d) the organisation of the bus traffic;
- e) the allocation of Mastership;
- f) the management of the bus;
- g) the Link Layer interface and the layer management interface.

This part is structured following the OSI layers of a reference MVB device as shown in Figure 1:

Caluse 4 Physical Layer

- Electrical medium for short distance (RS-485, 20,0 m)
- Electrical medium for middle distance (transformer-coupled, 200,0 m)
- Optical fibre for long distances (glass fibres, 2,0 km)

Clause 5 Medium-dependent signalling

- Frame encoding and decoding
- Line Unit interface
- Physical redundancy handling

Clause 6 Frames and telegrams

- Master Frame and Slave Frame encoding, Telegram timing

Clause 7 Link Layer Control

- Addressing
- Master Frame and Slave Frame format

Clause 8 Medium allocation

- Periodic Polling
- Event Polling
- Devices Scan

Clause 9 Mastership transfer

- Regular and exceptional mastership transfer

Clause 10 Link Layer Interface

- Link Process Data Interface (LPI),
- Link Message Data Interface (LMI),
- Link Supervision Interface (LSI).

Clause 11 Real-Time Protocols

Clause 12 Gateway Function

Clause 13 Network Management

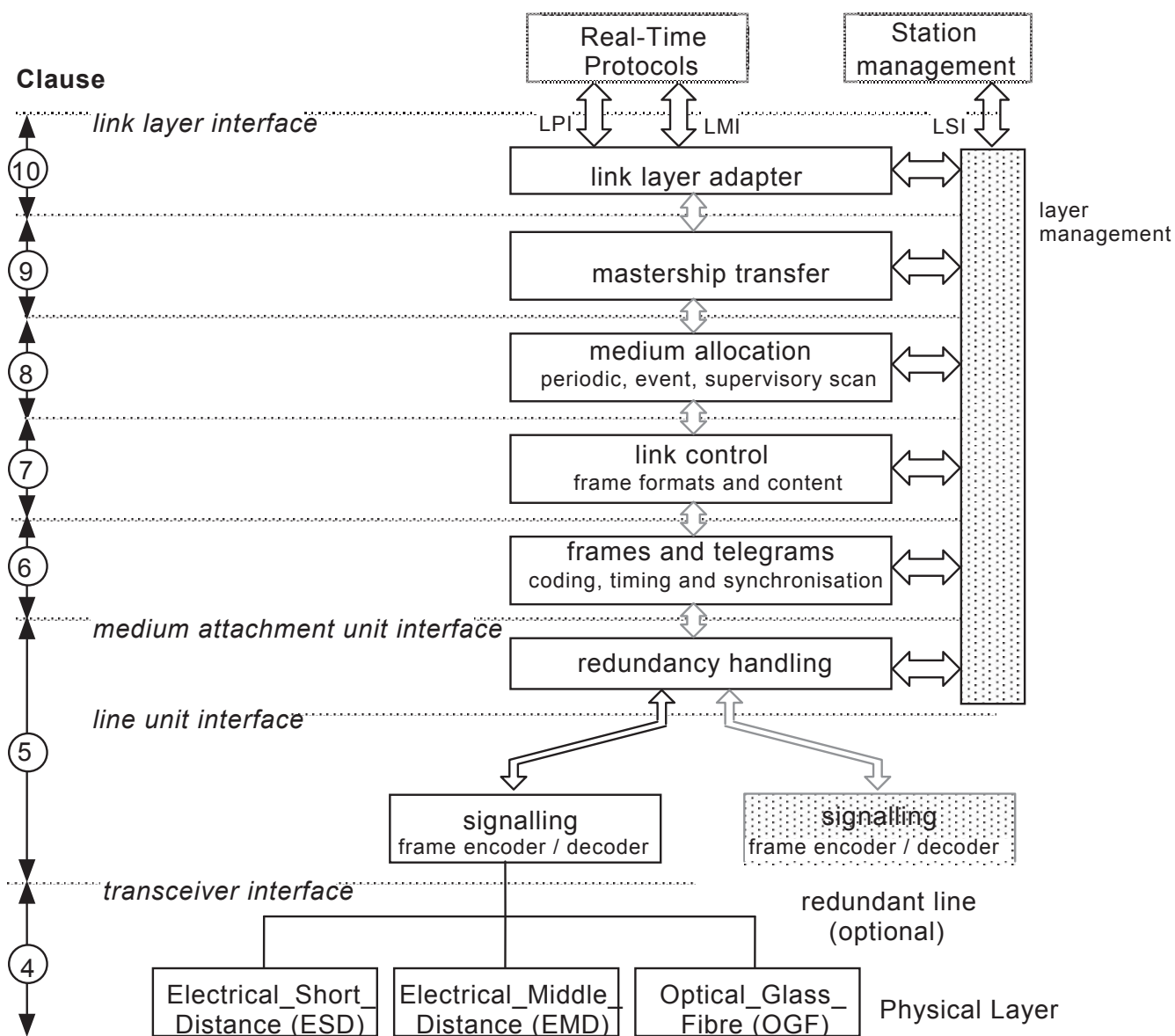


Figure 1 – Reference device and structure of the document

ELECTRONIC RAILWAY EQUIPMENT – TRAIN COMMUNICATION NETWORK (TCN) –

Part 3-1: Multifunction Vehicle Bus (MVB)

1 Scope

This part of IEC 61375 applies where MVB is required.

2 Normative references

The following documents, in whole or in part, are normatively referenced in this document and are indispensable for its application. For dated references, only the edition cited applies. For undated references, the latest edition of the referenced document (including any amendments) applies.

IEC 60245-1, *Rubber insulated cables – Rated voltages up to and including 450/750 V – Part 1: General requirements*

IEC 60304, *Standard colours for insulation for low-frequency cables and wires*

IEC 60332-1-1, *Tests on electric and optical fibre cables under fire conditions – Part 1-1: Test for vertical flame propagation for a single insulated wire or cable – Apparatus*

IEC 60571, *Electronic equipment used on rail vehicles*

IEC 60794-1-1, *Optical fibre cables – Part 1-1: Generic specification – General*

IEC 60807 (all parts), *Rectangular connectors for frequencies below 3 MHz*

IEC 60870-5-1, *Telecontrol equipment and systems – Part 5: Transmission protocols – Section One: Transmission frame formats*

IEC 61375-2-1, *Electronic railway equipment – Train Communication Network (TCN) – Part 2-1: Wire Train Bus (WTB)*

ISO/IEC 8482, *Information technology – Telecommunications and information exchange between systems – Twisted pair multipoint interconnections*

ISO/IEC 8802-2, *Information technology – Telecommunications and information exchange between systems – Local and metropolitan area networks – Specific requirements – Part 2: Logical link control*

ISO/IEC 8824 (all parts), *Information technology – Abstract Syntax Notation One (ASN.1)*

ISO/IEC 8825 (all parts), *Information technology – ASN.1 encoding rules*

ISO/IEC 9646 (all parts), *Information technology – Open Systems Interconnection – Conformance testing methodology and framework*

This is a free preview. Purchase the entire publication at the link below:

[Product Page](#)

-
- Looking for additional Standards? Visit Intertek Inform Infostore
 - Learn about LexConnect, All Jurisdictions, Standards referenced in Australian legislation
-