



NSAI
Standards

Irish Standard
I.S. EN ISO 19144-1:2012

Geographic information - Classification systems - Part 1: Classification system structure (ISO 19144-1:2009)

I.S. EN ISO 19144-1:2012

Incorporating amendments/corrigenda/National Annexes issued since publication:
EN ISO 19144-1:2012/AC:2012

The National Standards Authority of Ireland (NSAI) produces the following categories of formal documents:

I.S. xxx: Irish Standard – national specification based on the consensus of an expert panel and subject to public consultation.

S.R. xxx: Standard Recommendation - recommendation based on the consensus of an expert panel and subject to public consultation.

SWIFT xxx: A rapidly developed recommendatory document based on the consensus of the participants of an NSAI workshop.

This document replaces:

This document is based on:
EN ISO 19144-1:2012

Published:
12 April, 2012

This document was published under the authority of the NSAI and comes into effect on:
12 April, 2012

ICS number:

35.240.70

NSAI
1 Swift Square,
Northwood, Santry
Dublin 9

T +353 1 807 3800
F +353 1 807 3838
E standards@nsai.ie
W NSAI.ie

Sales:
T +353 1 857 6730
F +353 1 857 6729
W standards.ie

Údarás um Chaighdeáin Náisiúnta na hÉireann

English version
Version Française
Deutsche Fassung

Geographic information - Classification systems - Part 1: Classification
system structure - Technical Corrigendum 1 (ISO 19144-1:2009/Cor
1:2012)

Information géographique - Systèmes de
classification - Partie 1: Structure de
système de classification - Rectificatif
technique 1 (ISO 19144-1:2009/Cor
1:2012)

Geoinformation - Klassifizierungssysteme -
Teil 1: Struktur des Klassifizierungssystems
(ISO 19144-1:2009/Cor 1:2012)

This corrigendum becomes effective on 1 August 2012 for incorporation in the three official language versions of the EN.

Ce corrigendum prendra effet le 1 août 2012 pour incorporation dans les trois versions linguistiques officielles de la EN.

Die Berichtigung tritt am 1. August 2012 zur Einarbeitung in die drei offiziellen Sprachfassungen der EN in Kraft.



EUROPEAN COMMITTEE FOR STANDARDIZATION
COMITÉ EUROPÉEN DE NORMALISATION
EUROPÄISCHES KOMITEE FÜR NORMUNG

Management Centre: Avenue Marnix 17, B-1000 Brussels

Contents

Page

Foreword.....3

Foreword

This document (EN ISO 19144-1:2012/AC:2012) has been prepared by Technical Committee ISO/TC 211 "Geographic information/Geomatics" in collaboration with Technical Committee CEN/TC 287 "Geographic Information" the secretariat of which is held by BSI.

Endorsement notice

The text of ISO 19144-1:2009/Cor 1:2012 has been approved by CEN as a EN ISO 19144-1:2012/AC:2012 without any modification.

This page is intentionally left BLANK.



I.S. EN ISO 19144-1:2012
INTERNATIONAL STANDARD ISO 19144-1:2009
TECHNICAL CORRIGENDUM 1

Published 2012-08-01

INTERNATIONAL ORGANIZATION FOR STANDARDIZATION • МЕЖДУНАРОДНАЯ ОРГАНИЗАЦИЯ ПО СТАНДАРТИЗАЦИИ • ORGANISATION INTERNATIONALE DE NORMALISATION

Geographic information — Classification systems —

Part 1: Classification system structure

TECHNICAL CORRIGENDUM 1

Information géographique — Systèmes de classification —

Partie 1: Structure de système de classification

RECTIFICATIF TECHNIQUE 1

Technical Corrigendum 1 to ISO 19144-1:2009 was prepared by Technical Committee ISO/TC 211, *Geographic information/Geomatics*.

Page 13, 5.5.4

Replace the third paragraph of 5.5.4 with the following:

A CL_LegendClass instantiates the general GF_AttributeType metaclass from the GeneralFeatureModel of ISO 19109. It is implemented by a reference to a catalogue of legend classes through a CL_FeatureTypeReference. Feature attribute metadata can be associated with a legend class.

Page 13, Figure 8

Replace the existing Figure 8 with Figure 8 shown below.

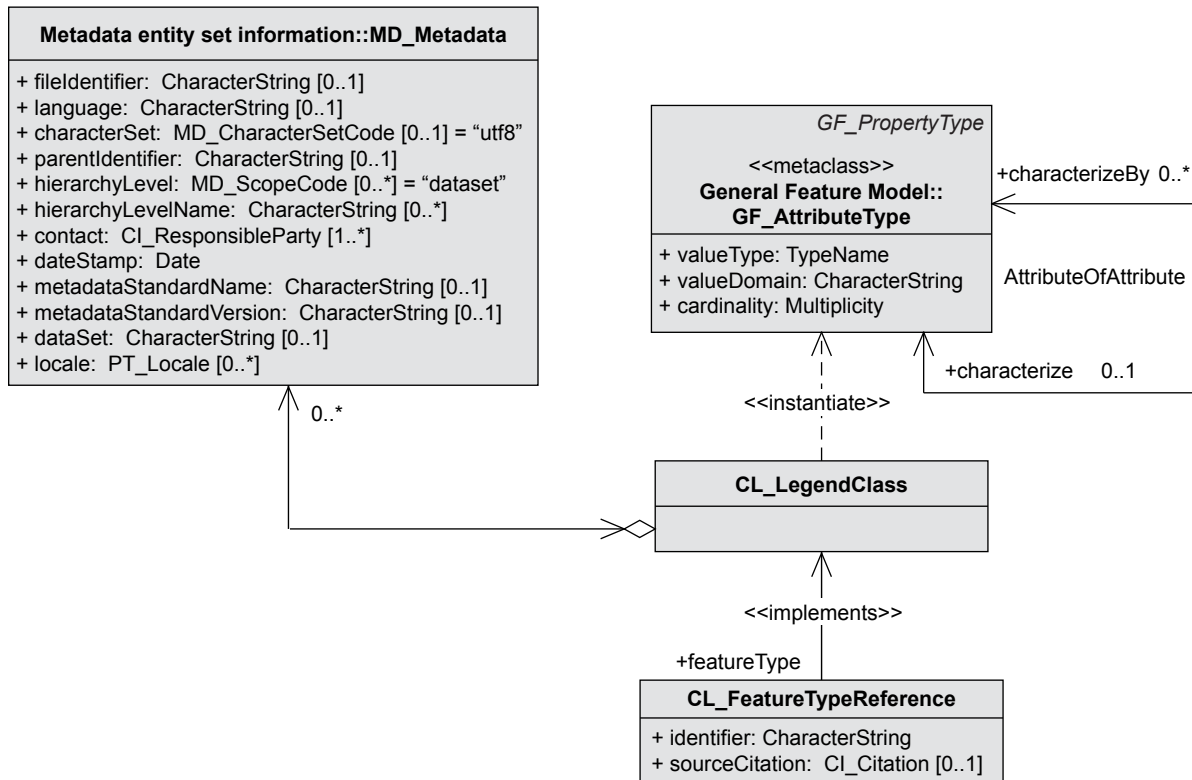


Figure 8 — Relationship of legend class to feature type

ICS 35.240.70

English Version

Geographic information - Classification systems - Part 1: Classification system structure (ISO 19144-1:2009)

Information géographique - Systèmes de classification -
Partie 1: Structure de système de classification (ISO
19144-1:2009)

Geoinformation - Klassifizierungssysteme - Teil 1: Struktur
des Klassifizierungssystems (ISO 19144-1:2009)

This European Standard was approved by CEN on 9 March 2012.

CEN members are bound to comply with the CEN/CENELEC Internal Regulations which stipulate the conditions for giving this European Standard the status of a national standard without any alteration. Up-to-date lists and bibliographical references concerning such national standards may be obtained on application to the CEN-CENELEC Management Centre or to any CEN member.

This European Standard exists in three official versions (English, French, German). A version in any other language made by translation under the responsibility of a CEN member into its own language and notified to the CEN-CENELEC Management Centre has the same status as the official versions.

CEN members are the national standards bodies of Austria, Belgium, Bulgaria, Croatia, Cyprus, Czech Republic, Denmark, Estonia, Finland, France, Germany, Greece, Hungary, Iceland, Ireland, Italy, Latvia, Lithuania, Luxembourg, Malta, Netherlands, Norway, Poland, Portugal, Romania, Slovakia, Slovenia, Spain, Sweden, Switzerland, Turkey and United Kingdom.



EUROPEAN COMMITTEE FOR STANDARDIZATION
COMITÉ EUROPÉEN DE NORMALISATION
EUROPÄISCHES KOMITEE FÜR NORMUNG

Management Centre: Avenue Marnix 17, B-1000 Brussels

Contents

Page

Foreword.....3

Foreword

The text of ISO 19144-1:2009 has been prepared by Technical Committee ISO/TC 211 “Geographic information/Geomatics” of the International Organization for Standardization (ISO) and has been taken over as EN ISO 19144-1:2012 by Technical Committee CEN/TC 287 “Geographic Information” the secretariat of which is held by BSI.

This European Standard shall be given the status of a national standard, either by publication of an identical text or by endorsement, at the latest by October 2012, and conflicting national standards shall be withdrawn at the latest by October 2012.

Attention is drawn to the possibility that some of the elements of this document may be the subject of patent rights. CEN [and/or CENELEC] shall not be held responsible for identifying any or all such patent rights.

According to the CEN/CENELEC Internal Regulations, the national standards organizations of the following countries are bound to implement this European Standard: Austria, Belgium, Bulgaria, Croatia, Cyprus, Czech Republic, Denmark, Estonia, Finland, France, Germany, Greece, Hungary, Iceland, Ireland, Italy, Latvia, Lithuania, Luxembourg, Malta, Netherlands, Norway, Poland, Portugal, Romania, Slovakia, Slovenia, Spain, Sweden, Switzerland, Turkey and the United Kingdom.

Endorsement notice

The text of ISO 19144-1:2009 has been approved by CEN as a EN ISO 19144-1:2012 without any modification.

This page is intentionally left BLANK.

I.S. EN ISO 19144-1:2012
**INTERNATIONAL
STANDARD**

**ISO
19144-1**

First edition
2009-08-15

**Geographic information — Classification
systems —**

Part 1:
Classification system structure

Information géographique — Systèmes de classification —

Partie 1: Structure de système de classification



Reference number
ISO 19144-1:2009(E)

© ISO 2009

PDF disclaimer

This PDF file may contain embedded typefaces. In accordance with Adobe's licensing policy, this file may be printed or viewed but shall not be edited unless the typefaces which are embedded are licensed to and installed on the computer performing the editing. In downloading this file, parties accept therein the responsibility of not infringing Adobe's licensing policy. The ISO Central Secretariat accepts no liability in this area.

Adobe is a trademark of Adobe Systems Incorporated.

Details of the software products used to create this PDF file can be found in the General Info relative to the file; the PDF-creation parameters were optimized for printing. Every care has been taken to ensure that the file is suitable for use by ISO member bodies. In the unlikely event that a problem relating to it is found, please inform the Central Secretariat at the address given below.



COPYRIGHT PROTECTED DOCUMENT

© ISO 2009

All rights reserved. Unless otherwise specified, no part of this publication may be reproduced or utilized in any form or by any means, electronic or mechanical, including photocopying and microfilm, without permission in writing from either ISO at the address below or ISO's member body in the country of the requester.

ISO copyright office
Case postale 56 • CH-1211 Geneva 20
Tel. + 41 22 749 01 11
Fax + 41 22 749 09 47
E-mail copyright@iso.org
Web www.iso.org

Published in Switzerland

Contents

Page

Foreword	iv
Introduction.....	v
1 Scope	1
2 Conformance	1
2.1 Classes	1
2.2 Conformance of a classification system.....	1
2.3 Conformance of a register of classifiers.....	1
2.4 Representation of classification results	1
3 Normative references	1
4 Terms, definitions and abbreviated terms	2
4.1 Terms and definitions	2
4.2 Abbreviated terms	4
5 Classification systems	5
5.1 Concept	5
5.2 Classification and legend	7
5.3 Hierarchical versus non-hierarchical systems.....	8
5.4 <i>A priori</i> and <i>a posteriori</i> classification systems	8
5.5 Structure of classified data	9
5.6 A classification data set.....	13
6 Management of classifiers	14
6.1 General	14
6.2 Concept dictionary register for a classification scheme	15
6.3 Management of classifiers through registration.....	15
6.4 Register structure.....	15
Annex A (normative) Abstract test suite	24
Annex B (informative) <i>A priori</i> and <i>a posteriori</i> classification systems	26
Bibliography.....	30

Foreword

ISO (the International Organization for Standardization) is a worldwide federation of national standards bodies (ISO member bodies). The work of preparing International Standards is normally carried out through ISO technical committees. Each member body interested in a subject for which a technical committee has been established has the right to be represented on that committee. International organizations, governmental and non-governmental, in liaison with ISO, also take part in the work. ISO collaborates closely with the International Electrotechnical Commission (IEC) on all matters of electrotechnical standardization.

International Standards are drafted in accordance with the rules given in the ISO/IEC Directives, Part 2.

The main task of technical committees is to prepare International Standards. Draft International Standards adopted by the technical committees are circulated to the member bodies for voting. Publication as an International Standard requires approval by at least 75 % of the member bodies casting a vote.

Attention is drawn to the possibility that some of the elements of this document may be the subject of patent rights. ISO shall not be held responsible for identifying any or all such patent rights.

ISO 19144-1 was prepared jointly by the Food and Agriculture Organization (FAO) of the United Nations and Technical Committee ISO/TC 211, *Geographic information/Geomatics* under a cooperative agreement between the two organizations.

ISO 19144 consists of the following parts, under the general title *Geographic information — Classification systems*:

— *Part 1: Classification system structure*

The following part is under preparation:

— *Part 2: Land cover classification system (LCCS)*

Introduction

This part of ISO 19144 is based on publications of the Food and Agriculture Organization (FAO) of the United Nations ^{[1][2]}. The first in a series of International Standards related to geographic classification systems, it defines the structure of such systems, together with the mechanism for defining and registering classifiers.

Since there are many different possible application areas, there is no single classification system that will serve all needs. The method by which classifiers are defined depends upon the application area. In addition, the classifiers used within a particular application area might not be adequate for all situations encountered within that application area and could need to be augmented over time. To facilitate extension of the set of classifiers in a particular application area, classifiers are registered in a register structure compliant with ISO 19135. This allows the set of classifiers to be maintained. The use of the ISO 19135 registration mechanism allows for separate registers to be defined for different sets of classifiers within multiple information communities, thereby satisfying application needs. This approach allows for independence between information communities, but also allows relationships to be developed between different classification systems that potentially allow the conversion, or partial conversion, of data from one classification system to another, or the fusion of data from two separate sources.

The concept of classification systems is well known in the geographic information community. A classification system can be used to subdivide any geographic area into small units, each of which carries an identifier that describes its type. The results can then be represented as a discrete coverage as described in ISO 19123. Many such classification systems can be defined to address any geographic area. Different application areas and different information communities can define their own classification systems. However, if the classification system is defined in a compatible way, interaction between different information communities becomes possible. In addition, in a particular application area, it is desirable that there be a few well-established classification systems, and that these themselves be standardized within information communities.

This part of ISO 19144 describes the common structure, while subsequent parts will allow for the standardization of specific classification systems.

A *coverage* is a function that returns values from its range for any direct position within its spatial, temporal or spatiotemporal domain. A *discrete coverage* is a function that returns the same feature attribute values for every direct position within any single spatial object, temporal object or spatiotemporal object in its domain. The domain is an area covered by the coverage function, and the discrete coverage breaks that area down into a set of spatial, temporal or spatiotemporal objects. The geometry of the discrete coverage used to represent the results of applying a classification system can be any type of discrete coverage — for example, a set of polygons fitted together like a jig-saw puzzle, a set of grid cells, or a set of points or curves.

A classification system consists of a set of classifiers. These classifiers may be algorithmically defined, or established according to a set of classification system definitions. The classifiers are application-area-dependent and are or will be defined in the other parts of ISO 19144 or other standards or publications. A register allows for the maintenance of a set of classifiers for a particular application area. A spatial, temporal or spatiotemporal object defined in terms of a set of classifiers is a *classified* object.

There is a commonality between conventional geographic features and classified objects. A *feature* is defined in ISO 19101 as an abstraction of real world phenomena. An example of a class of feature is a *building*, and a particular building, e.g. the UN building in New York, is an instance of a *feature class*. Conventional geographic features are *atomic units* that are assembled to build one type of geographic information data set.

A classification system works in the opposite manner, from the top down, by successively decomposing the whole within a coverage area. Classified objects are features, in that they are an abstraction of a real world phenomena, but classified objects are *not* atomic, because they are necessarily related to each other by the classifiers that decompose the whole. In a simple example of a classification system, the earth as a whole can be covered by either “land” or “water”, and two classifiers can be defined partitioning the attribute range into

two, identifying objects as being either land or water. Any particular area on the earth, corresponding to a classified object, would be of type “land” or “water”.

ISO 19135 specifies that a *technical standard* be required to define the item classes in any conformant register. This part of ISO 19144 defines schemas for registers conformant to ISO 19135 and serves as the technical standard that defines the item classes required for the registration of classifiers. It establishes a set of rules for specifying definitions that can be used in a particular context to establish classified objects.

Registers of classifiers can serve as sources of reference for similar registers established by other geographic information communities as part of a system of cross-referencing. Cross-referencing between respective items in registers of classifiers might be difficult in cases where the structure of registers differs between information communities. This part of ISO 19144 can serve as a guide for different information communities for the development of compatible registers that can support a system of classifier cross-referencing.

The structure of a classification system together with the mechanism of defining and registering classifiers defined in this part of ISO 19144 is general and can be applied to many different information-community-defined classification systems, including soil, landform, vegetation, urbanization and systems for understanding biodiversity and climate change. The use of this document will allow the relationship between different classification systems to be described.

Geographic information — Classification systems —

Part 1: Classification system structure

1 Scope

This part of ISO 19144 establishes the structure of a geographic information classification system, together with the mechanism for defining and registering the classifiers for such a system. It specifies the use of discrete coverages to represent the result of applying the classification system to a particular area and defines the technical structure of a register of classifiers in accordance with ISO 19135.

The structure can be used to develop specific classification systems that address particular application areas, specified in other parts of ISO 19144.

2 Conformance

2.1 Classes

Three conformance classes are identified in this part of ISO 19144.

2.2 Conformance of a classification system

Any classification system for which conformance to this part of ISO 19144 is claimed shall be in accordance with Annex A (see A.2).

2.3 Conformance of a register of classifiers

Any register of classifiers for which conformance to this part of ISO 19144 is claimed shall be in accordance with Annex A (see A.3) and ISO 19135:2005, A.1.

2.4 Representation of classification results

Any legend of classifiers for which conformance to this part of ISO 19144 is claimed shall be in accordance with Annex A (see A.4).

3 Normative references

The following referenced documents are indispensable for the application of this document. For dated references, only the edition cited applies. For undated references, the latest edition of the referenced document (including any amendments) applies.

ISO/TS 19103:2005, *Geographic information — Conceptual schema language*

ISO 19110:2005, *Geographic information — Methodology for feature cataloguing*

ISO 19115, *Geographic information — Metadata*

This is a free preview. Purchase the entire publication at the link below:

[Product Page](#)

-
- [Looking for additional Standards? Visit Intertek Inform Infostore](#)
 - [Learn about LexConnect, All Jurisdictions, Standards referenced in Australian legislation](#)
-