



NSAI
Standards

Irish Standard Recommendation
S.R. CEN/TR 16788:2014

Characterization of sludges - Guideline of good practice for thermal processes

S.R. CEN/TR 16788:2014

Incorporating amendments/corrigenda/National Annexes issued since publication:

The National Standards Authority of Ireland (NSAI) produces the following categories of formal documents:

I.S. xxx: Irish Standard — national specification based on the consensus of an expert panel and subject to public consultation.

S.R. xxx: Standard Recommendation — recommendation based on the consensus of an expert panel and subject to public consultation.

SWiFT xxx: A rapidly developed recommendatory document based on the consensus of the participants of an NSAI workshop.

This document replaces/revises/consolidates the NSAI adoption of the document(s) indicated on the CEN/CENELEC cover/Foreword and the following National document(s):

NOTE: The date of any NSAI previous adoption may not match the date of its original CEN/CENELEC document.

This document is based on:

CEN/TR 16788:2014

Published:

2014-11-26

This document was published under the authority of the NSAI and comes into effect on:

2014-12-24

ICS number:

13.030.20

NOTE: If blank see CEN/CENELEC cover page

NSAI
1 Swift Square,
Northwood, Santry
Dublin 9

T +353 1 807 3800
F +353 1 807 3838
E standards@nsai.ie
W NSAI.ie

Sales:
T +353 1 857 6730
F +353 1 857 6729
W standards.ie

Údarás um Chaighdeáin Náisiúnta na hÉireann

TECHNICAL REPORT

CEN/TR 16788

RAPPORT TECHNIQUE

TECHNISCHER BERICHT

November 2014

ICS 13.030.20

Supersedes CEN/TR 13767:2004, CEN/TR 13768:2004

English Version

Characterization of sludges - Guideline of good practice for thermal processes

Caractérisation des boues - Lignes directrices relatives aux bonnes pratiques pour les procédés thermiques

Charakterisierung von Schlämmen - Anleitung für die gute fachliche Praxis thermischer Prozesse

This Technical Report was approved by CEN on 25 November 2014. It has been drawn up by the Technical Committee CEN/TC 308.

CEN members are the national standards bodies of Austria, Belgium, Bulgaria, Croatia, Cyprus, Czech Republic, Denmark, Estonia, Finland, Former Yugoslav Republic of Macedonia, France, Germany, Greece, Hungary, Iceland, Ireland, Italy, Latvia, Lithuania, Luxembourg, Malta, Netherlands, Norway, Poland, Portugal, Romania, Slovakia, Slovenia, Spain, Sweden, Switzerland, Turkey and United Kingdom.



EUROPEAN COMMITTEE FOR STANDARDIZATION
COMITÉ EUROPÉEN DE NORMALISATION
EUROPÄISCHES KOMITEE FÜR NORMUNG

CEN-CENELEC Management Centre: Avenue Marnix 17, B-1000 Brussels

CEN/TR 16788:2014 (E)

| Contents | | Page |
|--------------------------------------------------------------------|--|-------------|
| Foreword..... | | 4 |
| Introduction | | 5 |
| 1 Scope | | 8 |
| 2 Normative references | | 8 |
| 3 Terms and definitions | | 8 |
| 4 Abbreviations | | 9 |
| 5 Regulatory aspects..... | | 10 |
| 6 Sludge properties | | 11 |
| 6.1 General..... | | 11 |
| 6.2 Physico-chemical characteristics | | 11 |
| 6.2.1 General..... | | 11 |
| 6.2.2 Dry matter | | 11 |
| 6.2.3 Loss on ignition | | 12 |
| 6.2.4 Calorific value | | 12 |
| 6.2.5 Grease, scum and screening..... | | 13 |
| 6.2.6 Physical consistency and others | | 13 |
| 6.3 Chemical characteristics | | 13 |
| 6.3.1 General..... | | 13 |
| 6.3.2 Sulphur | | 14 |
| 6.3.3 Phosphorus | | 14 |
| 6.3.4 Nitrogen | | 14 |
| 6.3.5 Chlorine and other halogen | | 14 |
| 6.3.6 Organic micro pollutants | | 14 |
| 6.3.7 Trace elements..... | | 15 |
| 7 Thermal processes fundamentals..... | | 15 |
| 7.1 Incineration..... | | 15 |
| 7.2 Gasification | | 16 |
| 7.3 Pyrolysis | | 17 |
| 7.4 Wet (air) oxidation..... | | 17 |
| 7.5 Others | | 18 |
| 8 Equipment | | 18 |
| 8.1 Incineration devices | | 18 |
| 8.1.1 General..... | | 18 |
| 8.1.2 Fluidized Bed Furnace (FBF) | | 20 |
| 8.1.3 Multiple Hearth Furnace (MHF)..... | | 22 |
| 8.1.4 Combination of FBF and MHF | | 22 |
| 8.1.5 Others | | 22 |
| 8.2 Gasification devices | | 23 |
| 8.3 Pyrolysis Devices | | 25 |
| 8.4 Wet air oxidation devices..... | | 26 |
| 8.5 Design aspects..... | | 26 |
| 8.6 Auxiliary equipment | | 27 |
| 8.6.1 General..... | | 27 |
| 8.6.2 Transport, receiving area, storage and feeding systems | | 27 |
| 8.6.3 Heat recovery | | 27 |
| 8.6.4 Flue gas cleaning..... | | 28 |
| 8.6.5 Ash and other residue handling..... | | 28 |
| 8.6.6 Wastewater treatment | | 28 |
| 8.6.7 Process monitoring | | 29 |

| | | |
|---------------------|----------------------------------------------------------------------------------------------------|-----------|
| 9 | Operational aspects | 29 |
| 9.1 | General | 29 |
| 9.2 | Incineration | 30 |
| 9.2.1 | General | 30 |
| 9.2.2 | Fluidized Bed Furnace (FBF) | 30 |
| 9.2.3 | Multiple Hearth Furnace (MHF) | 32 |
| 9.3 | Technologies without operational background in sewage sludge: Gasification/ Pyrolysis | 33 |
| 9.3.1 | General | 33 |
| 9.3.2 | Hazards | 33 |
| 10 | Management of energy and material products | 33 |
| 10.1 | General | 33 |
| 10.2 | Incineration | 33 |
| 10.3 | Gasification / Pyrolysis | 35 |
| 10.4 | Resume 10.1 through 10.3 | 37 |
| 10.5 | Wet Oxidation | 37 |
| 11 | Management of residues | 37 |
| 11.1 | General | 37 |
| 11.2 | Flue Gas | 37 |
| 11.2.1 | Composition/parameters | 37 |
| 11.2.2 | Equipment | 39 |
| 11.3 | Ashes | 42 |
| 11.3.1 | Composition/Parameters | 42 |
| 11.3.2 | Equipment | 42 |
| 11.4 | Wastewater | 42 |
| 12 | Economic aspects | 43 |
| 13 | Co-management with other organic wastes | 43 |
| 13.1 | General | 43 |
| 13.2 | Specific considerations | 44 |
| 13.3 | Additional storage and transports aspects | 49 |
| 13.3.1 | General | 49 |
| 13.3.2 | Storage | 49 |
| 13.3.3 | Transport | 50 |
| 14 | Assessment of impacts | 50 |
| 14.1 | General | 50 |
| 14.2 | Environmental aspects | 51 |
| 14.3 | Economic aspects | 51 |
| 14.4 | Social aspects | 51 |
| Annex A | (informative) Emission limit values | 53 |
| Annex B | (normative) Calorific Value calculations | 55 |
| Annex C | (informative) Tables | 57 |
| Annex D | (normative) Various systems to input sludge into a household waste incineration plant | 59 |
| D.1 | General | 59 |
| D.2 | Sludge whose dry matter content < 35 % | 59 |
| D.3 | Sludge whose dryness is > 65 % | 59 |
| D.4 | Sludge whose dry matter content between 35 % to 65 % | 60 |
| D.5 | Drying the sludge in the household waste incineration plant | 60 |
| Bibliography | | 61 |

CEN/TR 16788:2014 (E)

Foreword

This document (CEN/TR 16788:2014) has been prepared by Technical Committee CEN/TC 308 "Characterization of sludge", the secretariat of which is held by AFNOR.

This document supersedes CEN/TR 13767:2004 and CEN/TR 13768:2004.

Introduction

It is recognized that wastewater sludge is a potential source of valuable resources. Material recycling is higher in the waste hierarchy (ref. 2008/98/EC Directive) than recovery (energy and material). Sludge incineration and other organic matter treatments by thermal processes (gasification, pyrolysis and wet oxidation) should deal with materials which do not meet beneficial use requirements. They represent a consistent year round solution. To decide which type of solution is appropriate for a particular sludge, Figure 1 should be consulted.

Thermal processes involve, among others, reduction of volume and weight, highest destruction of toxic organic compounds, possible recovery of phosphorus and other useful materials. Drawbacks include high costs and complexity of plant operation.

In all cases, the energy balance (including energy for removing water etc.) and carbon footprint of the processes should be calculated to verify the environmental benefit of the process.

A good performance of a thermal processing plant also depends upon the provision of proper auxiliary equipment and devices, which include receiving and storage systems, pre-treatments equipment, feeding system, flue gas cleaning, heat recovery, ash handling, wastewater disposal and process monitoring.

The purpose of this Technical Report is to describe good practice for sludge incineration and other organic matter treatments by thermal processes in order to ensure a safe and economical operation. The main goals are to:

- describe the principal design parameters relevant to different process schemes;
- assess the operating procedures able to perform optimal energy balance, emissions control and equipment durability;
- provide the responsible authorities with well-established and easily applicable protocols for control purposes;
- promote the diffusion of good practice;
- contribute to taking appropriate decisions.

Priority should be given to reduction of pollutants at the origin and to recover, if technically and economically feasible, valuable substances (e.g. phosphorus) from sludge and derived products.

As part of a process and company quality approach, the relevant issues are therefore:

- exploiting the operating data and the statutory inspections carried out;
- rendering the process reliable, optimizing and of perpetuating it, as well as guaranteeing a permanent development;
- maintaining a climate of confidence between the authorities, the sludge producers, the transporters, the incineration plant and waste disposal site operators and allowing the services to be provided on a contractual basis.

The local considerations to be taken into account are:

- the adoption of a more convenient solution with respect to other options;
- the geographical context, the client population and therefore the potential input material as well as the expected developments;

CEN/TR 16788:2014 (E)

- the proximity of the sewage treatment plant and the local transportation network;
- the capacity of treatment plants.

All of the recommendations of this document constitute a framework within which the thermal processes can be proposed in addition to and/or as a substitution for land utilization, landfilling when allowed, or any other process when relevant situations occur and appropriate conditions are met.

The management of sludges both upstream and downstream of the treatment process to ensure that it is suitable for the outlets available is outlined in CEN/TS 13714:2013.

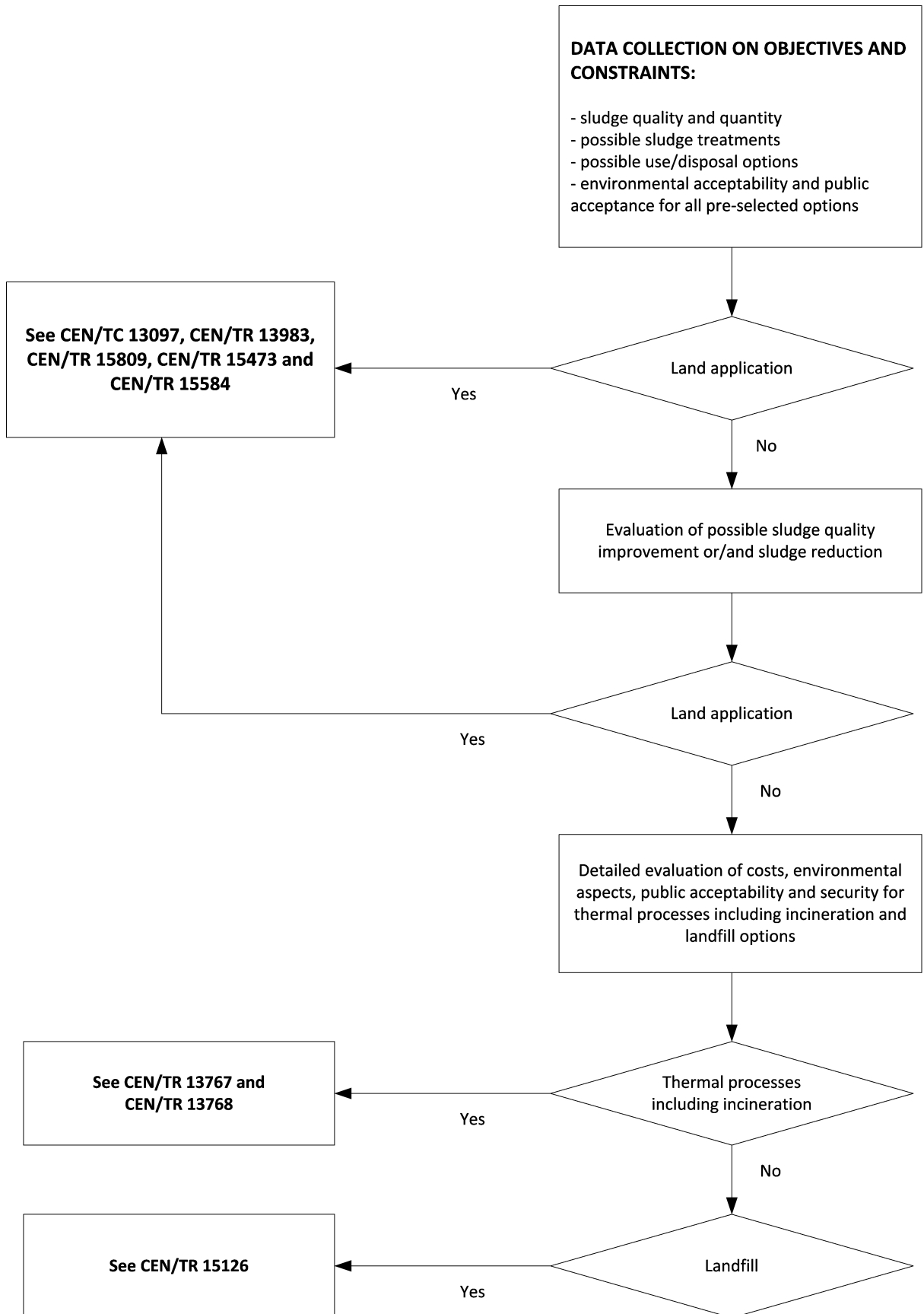


Figure 1 — A basic scheme for deciding on sewage sludge use/disposal options and the relevant CEN/TC 308 guidance documents

CEN/TR 16788:2014 (E)

1 Scope

This Technical Report describes good practice for the incineration and other organic matter treatment by thermal processes of sludges.

Thermal drying, thermal conditioning and thermal hydrolysis are excluded.

This Technical Report is applicable for sludges described in the scope of CEN/TC 308 specifically derived from:

- storm water handling;
- night soil;
- urban wastewater collecting systems;
- urban wastewater treatment plants;
- treating industrial wastewater similar to urban wastewater (as defined in Directive 91/271/EEC);

but excluding hazardous sludges from industry.

2 Normative references

Not applicable.

3 Terms and definitions

For the purposes of this document, the following terms and definitions apply.

3.1

thermal treatment

reduction of organic matter by incineration, gasification, pyrolysis and wet air oxidation

3.2

thermal process

technique for the application of thermal treatment

3.3

combined thermal treatment

thermal treatment of sludge and other waste in the same device

3.4

pyrolysis

thermal treatment without supply of oxygen

3.5

gasification

thermal treatment with less than the stoichiometric supply of oxygen or air (partial combustion)

3.6

furnace

enclosed chamber where combustion of organic matter takes place

This is a free preview. Purchase the entire publication at the link below:

[Product Page](#)

-
- [Looking for additional Standards? Visit Intertek Inform Infostore](#)
 - [Learn about LexConnect, All Jurisdictions, Standards referenced in Australian legislation](#)
-