



**NSAI**  
Standards

Irish Standard  
I.S. EN 1873:2014+A1:2016

Prefabricated accessories for roofing -  
Individual rooflights of plastics - Product  
specification and test methods

**I.S. EN 1873:2014+A1:2016**

*Incorporating amendments/corrigenda/National Annexes issued since publication:*

The National Standards Authority of Ireland (NSAI) produces the following categories of formal documents:

I.S. xxx: Irish Standard — national specification based on the consensus of an expert panel and subject to public consultation.

S.R. xxx: Standard Recommendation — recommendation based on the consensus of an expert panel and subject to public consultation.

SWiFT xxx: A rapidly developed recommendatory document based on the consensus of the participants of an NSAI workshop.

*This document replaces/revises/consolidates the NSAI adoption of the document(s) indicated on the CEN/CENELEC cover/Foreword and the following National document(s):*

*NOTE: The date of any NSAI previous adoption may not match the date of its original CEN/CENELEC document.*

*This document is based on:*

EN 1873:2014+A1:2016

*Published:*

2016-02-17

*This document was published under the authority of the NSAI and comes into effect on:*

2016-03-06

ICS number:

91.060.20

NOTE: If blank see CEN/CENELEC cover page

NSAI  
1 Swift Square,  
Northwood, Santry  
Dublin 9

T +353 1 807 3800  
F +353 1 807 3838  
E standards@nsai.ie  
W NSAI.ie

Sales:  
T +353 1 857 6730  
F +353 1 857 6729  
W standards.ie

Údarás um Chaighdeáin Náisiúnta na hÉireann

## National Foreword

I.S. EN 1873:2014+A1:2016 is the adopted Irish version of the European Document EN 1873:2014+A1:2016, Prefabricated accessories for roofing - Individual rooflights of plastics - Product specification and test methods

This document does not purport to include all the necessary provisions of a contract. Users are responsible for its correct application.

**Compliance with this document does not of itself confer immunity from legal obligations.**

*In line with international standards practice the decimal point is shown as a comma (,) throughout this document.*

This page is intentionally left blank

EUROPEAN STANDARD

**EN 1873:2014+A1**

NORME EUROPÉENNE

EUROPÄISCHE NORM

February 2016

ICS 91.060.20

Supersedes EN 1873:2014

English Version

## Prefabricated accessories for roofing - Individual rooflights of plastics - Product specification and test methods

Accessoires préfabriqués pour couverture -  
Lanterneaux ponctuels en matière plastique -  
Spécifications des produits et méthodes d'essais

Vorgefertigte Zubehörteile für Dacheindeckungen -  
Lichtkuppeln aus Kunststoff - Produktfestlegungen und  
Prüfverfahren

This European Standard was approved by CEN on 23 February 2014 and includes Amendment 1 approved by CEN on 7 December 2015.

CEN members are bound to comply with the CEN/CENELEC Internal Regulations which stipulate the conditions for giving this European Standard the status of a national standard without any alteration. Up-to-date lists and bibliographical references concerning such national standards may be obtained on application to the CEN-CENELEC Management Centre or to any CEN member.

This European Standard exists in three official versions (English, French, German). A version in any other language made by translation under the responsibility of a CEN member into its own language and notified to the CEN-CENELEC Management Centre has the same status as the official versions.

CEN members are the national standards bodies of Austria, Belgium, Bulgaria, Croatia, Cyprus, Czech Republic, Denmark, Estonia, Finland, Former Yugoslav Republic of Macedonia, France, Germany, Greece, Hungary, Iceland, Ireland, Italy, Latvia, Lithuania, Luxembourg, Malta, Netherlands, Norway, Poland, Portugal, Romania, Slovakia, Slovenia, Spain, Sweden, Switzerland, Turkey and United Kingdom.



EUROPEAN COMMITTEE FOR STANDARDIZATION  
COMITÉ EUROPÉEN DE NORMALISATION  
EUROPÄISCHES KOMITEE FÜR NORMUNG

**CEN-CENELEC Management Centre: Avenue Marnix 17, B-1000 Brussels**

<b>Contents</b>	<b>Page</b>
European foreword.....	6
<b>1 Scope</b> .....	<b>7</b>
<b>2 Normative references</b> .....	<b>10</b>
<b>3 Terms and definitions</b> .....	<b>11</b>
<b>4 Symbols and abbreviations</b> .....	<b>13</b>
<b>5 Requirements</b> .....	<b>15</b>
<b>5.1 Radiation properties</b> .....	<b>15</b>
5.1.1 General.....	15
5.1.2 Light transmission.....	15
5.1.3 Solar direct transmittance $\tau_e$ .....	16
5.1.4 Total solar energy transmittance $g$ .....	16
<b>5.2 Durability</b> .....	<b>16</b>
<b>5.3 Water tightness</b> .....	<b>16</b>
<b>5.4 Mechanical performances</b> .....	<b>16</b>
5.4.1 Resistance to upward loads.....	16
5.4.2 Resistance to downward loads.....	16
5.4.3 Impact resistance.....	17
<b>5.5 Reaction to fire</b> .....	<b>17</b>
<b>5.6 Resistance to fire</b> .....	<b>18</b>
<b>5.7 External fire performance</b> .....	<b>18</b>
<b>5.8 Air permeability</b> .....	<b>18</b>
<b>5.9 Thermal resistance</b> .....	<b>18</b>
<b>5.10 Airborne sound insulation</b> .....	<b>19</b>
<b>5.11 Release of dangerous substances</b> .....	<b>19</b>
<b>6 Testing and classification</b> .....	<b>19</b>
<b>6.1 General</b> .....	<b>19</b>
<b>6.2 Radiation properties</b> .....	<b>19</b>
6.2.1 Total luminous transmittance.....	19
6.2.2 Determination of solar direct transmittance $\tau_e$ .....	20
6.2.3 Determination of total solar energy transmittance $g$ .....	20
<b>6.3 Durability</b> .....	<b>20</b>
6.3.1 Classification for durability.....	20
6.3.2 Conditions for accelerated ageing.....	22
6.3.3 Variation of light transmission.....	22
6.3.4 Variation in yellowness index.....	23
6.3.5 Variation of mechanical properties with ageing.....	23
6.3.6 Test specimen.....	23
<b>6.4 Watertightness</b> .....	<b>24</b>
6.4.1 Principle.....	24
6.4.2 Procedure.....	24
6.4.3 Apparatus.....	24
6.4.4 Test specimen.....	24

<b>Dimensions in millimetres .....</b>	<b>25</b>
<b>6.5 Mechanical performances .....</b>	<b>26</b>
<b>6.5.1 Resistance to upward and downward loads .....</b>	<b>26</b>
<b>6.5.2 Impact resistance .....</b>	<b>27</b>
<b>6.6 Fire behaviour .....</b>	<b>29</b>
<b>6.7 Air permeability .....</b>	<b>29</b>
<b>6.8 Thermal transmittance .....</b>	<b>30</b>
<b>6.9 Relationship between characteristics, families and test specimens .....</b>	<b>30</b>
<b>6.10 Test report .....</b>	<b>32</b>
<b>7 Assessment and verification of constancy of performance - AVCP .....</b>	<b>32</b>
<b>7.1 General .....</b>	<b>32</b>
<b>7.2 Type testing .....</b>	<b>33</b>
<b>7.2.1 General .....</b>	<b>33</b>
<b>7.2.2 Test reports .....</b>	<b>33</b>
<b>7.3 Factory production control (FPC) .....</b>	<b>33</b>
<b>7.3.1 General .....</b>	<b>33</b>
<b>7.3.2 General requirements .....</b>	<b>34</b>
<b>7.3.3 Product specific requirements .....</b>	<b>36</b>
<b>7.3.4 Initial inspection of factory and of FPC .....</b>	<b>37</b>
<b>7.3.5 Continuous surveillance of FPC .....</b>	<b>38</b>
<b>7.3.6 Procedure for modifications .....</b>	<b>38</b>
<b>8 Designation and marking .....</b>	<b>38</b>
<b>Annex A (informative) Guidelines for safety, application, use and maintenance .....</b>	<b>40</b>
<b>A.1 General .....</b>	<b>40</b>
<b>A.2 Guidelines for safety .....</b>	<b>40</b>
<b>A.3 Guidelines for application and use .....</b>	<b>40</b>
<b>A.4 Maintenance .....</b>	<b>41</b>
<b>Annex B (normative) Alternative test method for the determination of light transmission .....</b>	<b>42</b>
<b>B.1 General .....</b>	<b>42</b>
<b>B.2 Apparatus .....</b>	<b>42</b>
<b>B.3 Test pieces .....</b>	<b>43</b>
<b>B.4 Procedure .....</b>	<b>43</b>
<b>B.5 Expression of results .....</b>	<b>43</b>
<b>Annex C (normative) Test method for air permeability .....</b>	<b>44</b>
<b>C.1 General .....</b>	<b>44</b>
<b>C.2 Test apparatus .....</b>	<b>44</b>
<b>C.3 Test specimen .....</b>	<b>44</b>
<b>C.4 Test procedure .....</b>	<b>45</b>
<b>C.5 Evaluation of the results .....</b>	<b>45</b>
<b>C.6 Rounding off to be used for the air permeability .....</b>	<b>45</b>
<b>C.7 Test report .....</b>	<b>46</b>
<b>Annex D (normative) Determination of thermal transmittance of rooflight .....</b>	<b>47</b>

## EN 1873:2014+A1:2016 (E)

<b>D.1</b>	<b>General</b> .....	<b>47</b>
<b>D.2</b>	<b>Determination of thermal transmittance of rooflight components</b> .....	<b>47</b>
<b>D.2.1</b>	<b>Determination by measurement</b> .....	<b>47</b>
<b>D.2.2</b>	<b>Determination by calculation</b> .....	<b>47</b>
<b>D.2.2.1</b>	<b>General</b> .....	<b>47</b>
<b>D.2.2.2</b>	<b>Thermal transmittance of the upstand <math>U_{up}</math> and <math>U_{up,e}</math></b> .....	<b>47</b>
<b>D.2.2.3</b>	<b>Thermal transmittance of the edge profile <math>U_e</math></b> .....	<b>47</b>
<b>D.2.2.4</b>	<b>Thermal transmittance of the junction part <math>U_j</math></b> .....	<b>47</b>
<b>D.2.2.5</b>	<b>Thermal transmittance of the translucent parts <math>U_t</math></b> .....	<b>47</b>
<b>D.2.2.6</b>	<b>Linear thermal transmittances <math>\Psi_e, \Psi_j, \Psi_t</math></b> .....	<b>48</b>
<b>D.2.2.7</b>	<b>Definition of starting point for calculation of thermal transmittance</b> .....	<b>48</b>
<b>D.3</b>	<b>Determination of areas of a rooflight</b> .....	<b>49</b>
<b>D.3.1</b>	<b>Components</b> .....	<b>49</b>
<b>D.3.2</b>	<b>Area of the rooflight upstand</b> .....	<b>50</b>
<b>D.3.3</b>	<b>Area of the edge profile</b> .....	<b>51</b>
<b>D.3.4</b>	<b>Area of the junction part</b> .....	<b>53</b>
<b>D.3.5</b>	<b>Area of the translucent part <math>A_t</math></b> .....	<b>54</b>
<b>D.3.6</b>	<b>Surface of the rooflight</b> .....	<b>54</b>
<b>D.4</b>	<b>Total thermal transmittance of individual rooflights</b> .....	<b>55</b>
<b>D.4.1</b>	<b>General</b> .....	<b>55</b>
<b>D.4.2</b>	<b>Total thermal transmittance <math>U_r</math> of individual rooflights including the edge profile</b> .....	<b>56</b>
<b>D.4.3</b>	<b>Total thermal transmittance <math>U_{rc}</math> of individual rooflights including the edge profile and upstand</b> .....	<b>57</b>
<b>D.4.4</b>	<b>Total thermal transmittance <math>U_{rc}</math> of individual rooflights including the edge profile and upstand (alternative method)</b> .....	<b>59</b>
<b>D.4.5</b>	<b>Total thermal transmittance <math>U_{rc}</math> of individual rooflights including the upstand without edge profile</b> .....	<b>60</b>
<b>D.4.6</b>	<b>Total thermal transmittance <math>U_{rc}</math> of individual rooflights including the edge profile and upstand with more than one translucent part</b> .....	<b>62</b>
<b>D.4.7</b>	<b>Rounding off to be used for thermal transmittance in calculation and classification</b> .....	<b>63</b>
<b>D.5</b>	<b>Test specimen for evaluation of thermal transmittance: <math>U_{r,ref}, U_{rc,ref300}</math></b> .....	<b>63</b>
<b>D.5.1</b>	<b>General</b> .....	<b>63</b>
<b>D.5.2</b>	<b>Reference models</b> .....	<b>64</b>
<b>D.5.2.1</b>	<b>Individual rooflight without upstand</b> .....	<b>64</b>
<b>D.5.2.2</b>	<b>Individual rooflight with upstand</b> .....	<b>64</b>
<b>D.6</b>	<b>Characteristics for supplied rooflight</b> .....	<b>65</b>
<b>Annex E (normative)</b>	<b>Reaction to fire test</b> .....	<b>66</b>



<b>E.1</b>	<b>Class E</b> .....	<b>66</b>
<b>E.1.1</b>	<b>General</b> .....	<b>66</b>
<b>E.1.2</b>	<b>Mounting and fixing for the small flame test in accordance to EN ISO 11925-2</b> .....	<b>66</b>
<b>E.2</b>	<b>Class A2 to class D</b> .....	<b>67</b>
<b>E.2.1</b>	<b>General</b> .....	<b>67</b>
<b>E.2.2</b>	<b>Mounting and fixing for the SBI test</b> .....	<b>67</b>
<b>E.3</b>	<b>Class A1</b> .....	<b>67</b>
<b>Annex ZA (informative)</b>	<b>Clauses of this European Standard addressing the provisions of the EU Construction Products Regulation</b> .....	<b>68</b>
<b>ZA.1</b>	<b>Scope and relevant characteristics</b> .....	<b>68</b>
<b>ZA.2</b>	<b>Procedure for AVCP of prefabricated accessories for roofing – individual rooflights of plastics</b> .....	<b>70</b>
<b>ZA.2.1</b>	<b>Systems of AVCP</b> .....	<b>70</b>
<b>ZA.2.2</b>	<b>Declaration of performance (DoP)</b> .....	<b>72</b>
<b>ZA.2.2.1</b>	<b>General</b> .....	<b>72</b>
<b>ZA.2.2.2</b>	<b>Content</b> .....	<b>73</b>
<b>ZA.2.2.3</b>	<b>Example of DoP</b> .....	<b>74</b>
<b>ZA.3</b>	<b>CE marking and labelling</b> .....	<b>77</b>
<b>Bibliography</b>	.....	<b>79</b>

**EN 1873:2014+A1:2016 (E)****European foreword**

This document (EN 1873:2014+A1:2016) has been prepared by Technical Committee CEN/TC 128 “Roof covering products for discontinuous laying and products for wall cladding”, the secretariat of which is held by NBN.

This European Standard shall be given the status of a national standard, either by publication of an identical text or by endorsement, at the latest by August 2016, and conflicting national standards shall be withdrawn at the latest by August 2016.

Attention is drawn to the possibility that some of the elements of this document may be the subject of patent rights. CEN [and/or CENELEC] shall not be held responsible for identifying any or all such patent rights.

This document includes Amendment 1 approved by CEN on 2015-12-07.

This document supersedes A1 EN 1873:2014 A1.

The start and finish of text introduced or altered by amendment is indicated in the text by tags A1 A1.

This document has been prepared under a mandate given to CEN by the European Commission and the European Free Trade Association, and supports essential requirements of EU Directive(s).

For relationship with the EU Regulation concerning the CPR, see informative Annex ZA, which is an integral part of this document.

A1 *deleted text* A1

According to the CEN/CENELEC Internal Regulations, the national standards organizations of the following countries are bound to implement this European Standard: Austria, Belgium, Bulgaria, Croatia, Cyprus, Czech Republic, Denmark, Estonia, Finland, Former Yugoslav Republic of Macedonia, France, Germany, Greece, Hungary, Iceland, Ireland, Italy, Latvia, Lithuania, Luxembourg, Malta, Netherlands, Norway, Poland, Portugal, Romania, Slovakia, Slovenia, Spain, Sweden, Switzerland, Turkey and the United Kingdom.

## **1 Scope**

This European Standard specifies requirements for rooflights made of plastic materials (e.g. GF-UP, PC, PMMA, PVC) and rooflights with upstands made of e.g. GF-UP, PVC, steel, aluminium or wood for installation in roofs. These rooflights serve the purpose of introducing daylight.

This European Standard applies to rooflights with a rectangular or circular ground plan (see Figures 1 and 2), with an opening span (width) or diameter not larger than 2,5 m and an opening length not larger than 3,0 m in roof pitches up to 25°. This document does not cover rooflights which contribute to the load-bearing or stiffness of the roof itself.

This European Standard applies to rooflights and rooflights with upstand, where a single manufacturer provides all components of the rooflight with upstand, which are bought in a single purchase.

This European Standard applies to rooflights with one or several translucent parts.

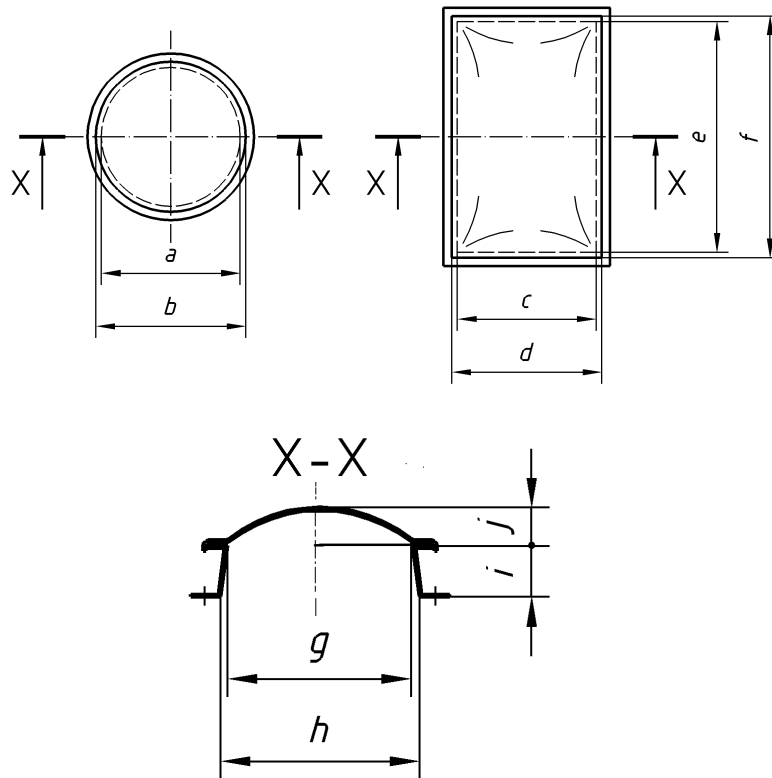
Rooflights may be opened by means of opening devices in one or more parts for ventilation.

The possible additional functions of day to day ventilation, smoke and heat ventilation e.g. in case of fire in accordance with EN 12101-2, roof access, and/ or slinging point e.g. in accordance with EN 795 are outside the scope of this document.

This European Standard does not include calculations with regard to construction, design requirements and installation techniques.

NOTE Guidelines for safety, application, use and maintenance of individual rooflights are presented in Annex A.

**EN 1873:2014+A1:2016 (E)**

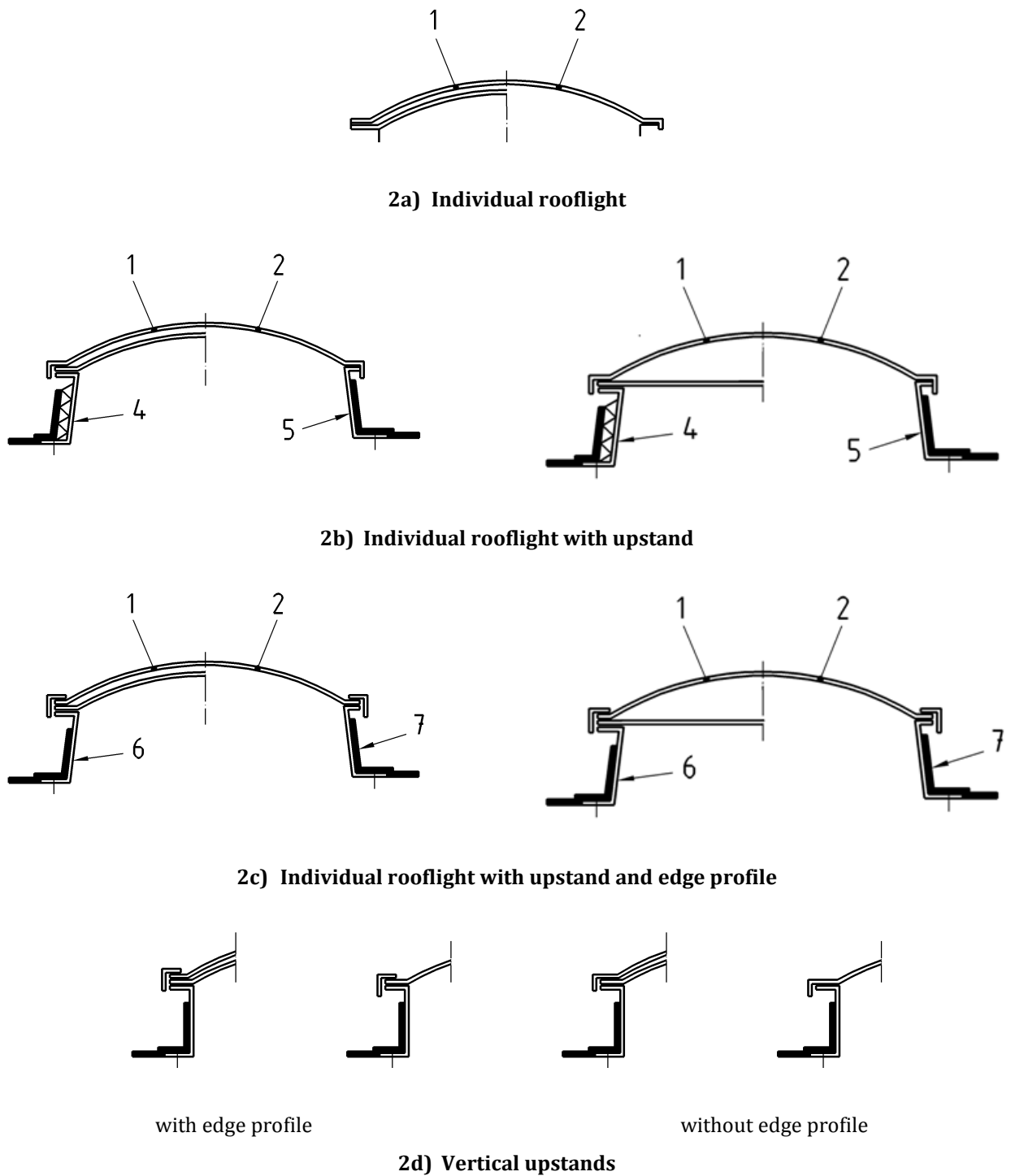


**Section X -X without and with additional horizontal skin**

**Key**

- |   |                       |   |                     |
|---|-----------------------|---|---------------------|
| a | daylight diameter     | f | roof opening length |
| b | roof opening diameter | g | daylight size       |
| c | daylight width        | h | roof opening size   |
| d | roof opening width    | i | upstand height      |
| e | daylight length       | j | rooflight height    |

**Figure 1 — Typical individual rooflights**



**Key**

- |   |              |   |                       |   |             |
|---|--------------|---|-----------------------|---|-------------|
| 1 | multi skin   | 4 | insulated upstand     | 7 | roof finish |
| 2 | single skin  | 5 | non insulated upstand |   |             |
| 3 | edge profile | 6 | splayed upstand       |   |             |

**Figure 2 — Cross sections of typical individual rooflights and upstands**

This is a free preview. Purchase the entire publication at the link below:

[Product Page](#)

- 
- [Looking for additional Standards? Visit Intertek Inform Infostore](#)
  - [Learn about LexConnect, All Jurisdictions, Standards referenced in Australian legislation](#)
-